

CHALLENGER

DEHUMIDIFYING DRYER

DFG-ZK series

With Touchscreen panel include MODBUS system



PT KAWATA INDONESIA



New Generation

- New Color
- Elegant white full textured coating
- The filter position is on the front, making it easier to clean
- Drying Hopper 15~75 used latch type upper lid for easy cleaning
- Collection box with batch cleaning system, keeps material moisture maintained



Intelligent Control

- Intelligent interface, easy to operate
- Touch screen panel
- Support for MODBUS system
- Drying graphic temperature in a real time
- Error list & trouble shooting could be displayed as well



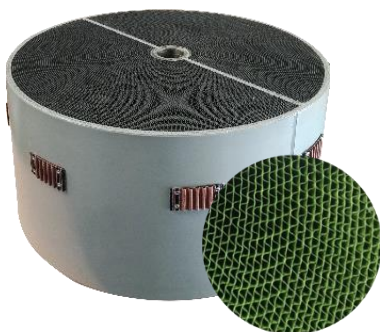
SSR V-0 Type

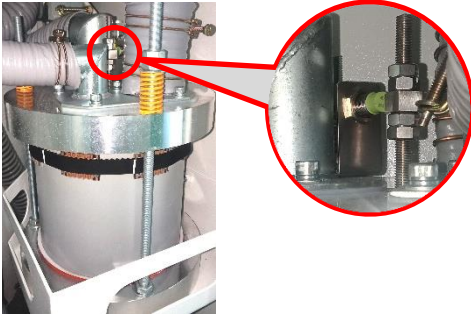
- SSR for heater control
- Incombustible type



Corrugated Honeycomb

- Producing lower dew point air (- 40)
- The zeolite as a desiccant has high absorption efficiency even in dehumidifying the high temperature air of 100°C and the air of low humidity
- Crystalline zeolite has a microporous structure, reducing heat deterioration and minimizing a decline saves energy and reduces pressure loss





Honeycomb Sensor

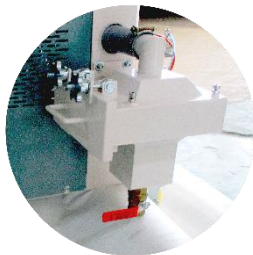
- Capacitive type sensor as a warning if the honeycomb is not rotating properly

✂ Option

Cyclone Filter



The device is to remove excess dust on the conveying line with the cyclone method and equipped with a dust collector tank as a dust reservoir with latch lock so it is easy to open the dust tank.



Oil Demister

Some kinds of plastic materials contain oil. This device is designed to trap oil mixed with dry air due to heating process on the plastic material in drying system

Energy Saving Unit



Regen Heat Exchanger (RHE) is an energy saving device. It works by utilizing heat from the exhaust air regen process. It helps heat the regeneration air to make the heater's work becomes easier
Equipped with a water cooler, making the exhaust air regeneration reduce to below 50°C, this is very helpful to reduce air heat pollution in the production area.

✂ More Option

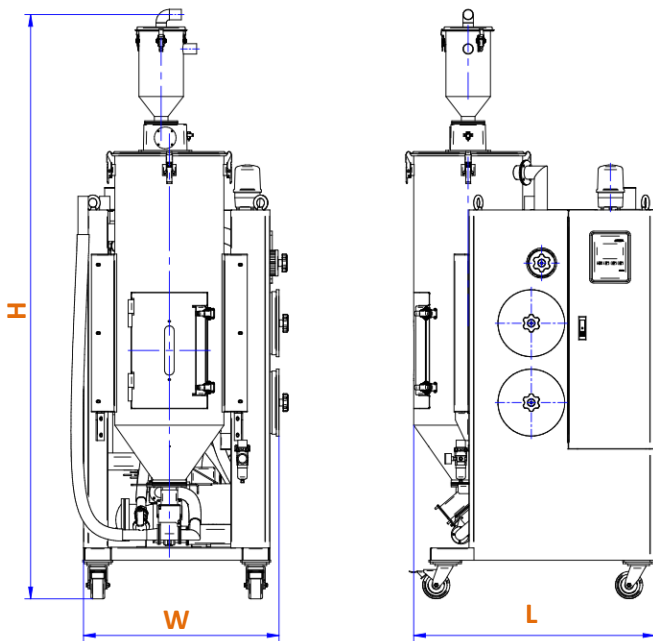
- Dew point check (adding dew point sensor)
- Material temperature (adding temp. sensor on drying hopper)
- ELCB (Earth Leakage Circuit Breaker)
- Adjustable sensor on drying hopper (adding Proximity sensor)

Specification

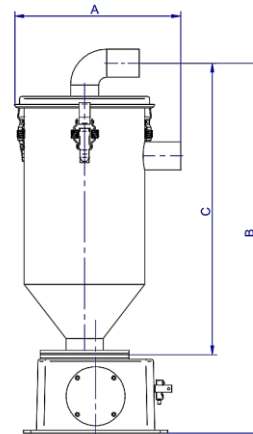
DFG-ZK series

Item	Model	DFG15ZK-KI	DFG25ZK-KI	DFG50ZK-KI	DFG75ZK-KI	DFG100ZK-KI	DFG150ZK-KI	DFG200ZK-KI	DFG300ZK-KI	
Air Flow (M ³ /h) (50/60Hz)		35/45		50/60	80/100		110/120	145/160	220/240	
Dew Point (°C)		-40								
Drying Temperature (°C)		75-160					65-160			
Drying Blower Capacity (kw) (50/60 Hz)		0.17/0.28		0.28/0.42	0.55/0.85		1.3/1.9	2.3/3.4	3.3/5.0	
Regeneration Heater Capacity (kw)		2.0					2.7	4.0		
Regeneration Blower Capacity (kw) (50/60 Hz)		0.09/0.12						0.17/0.28		
Desican Chamber Motor Capacity (kw)		0.025								
Drying Hopper	Effective Capacity (L)	25	42	84	125	167	250	335	500	
	Feeding Volume (kg)	15	25	50	75	100	150	200	300	
	Drying hopper inner material	SUS304								
	Drying heater Capacity (kw)	2.0		2.7	4.0		6.0	9.0		
	Accessories	Circulating air conveying, batch conveying, glass wool insulation								
Primary Hopper (Convey-1)		AL-02 (Magnetic Sensor)		AL-05 (Magnetic Sensor)				AL-10 (Magnetic Sensor)		
Secondary Hopper (Convey-2)		VL-02N (Photoelectric Sensor)				VL-05 (Torque Sensor)		VL-10 (Torque Sensor)		
Conveying Blower Capacity (kw) (50/60 Hz)		0.55/0.85				1.3/1.9				
Power Supply (KVA)		5.3	6.2	8.0	8.9	12.7	18.6	19.8		
Main Breaker Capacity (A) (200-220Volt / 380-415Volt)		32/16		40/20	50/32	63/32	100/50			
Compressed air requirement (L/min)		5 (0.4-0.6 Mpa) Pipe size Ø8								
Cooling water requirement (L/min)		No need					15 (0.1-0.3 Mpa at 32°C)			
Standard Accessoris		Power Cable 5 Meter, PVC hose (Ø38x20m), suction pipe Ø38*650x1, Signal kable 5m								
Machine Dimension L x W x H		846 x 696 x 1482	846 x 696 x 1732	882 x 737 x 2138	966 x 746 x 2236	1136x760x2244	1210x760x2428	1452x887x2585	1516x911x2832	
Machine Weight (Kg)		190	220	260	280	320	355	520	615	

* Machine Dimension



* Primary Hopper



Model	AL-02	AL-05	AL-10
A (mm)	225	225	340
B (mm)	408	500	549
C (mm)	299	293	490
Sensor	Magnetic Sensor		
Pipe Size (mm)	Ø38		

* Secondary Hoopper

Model	VL-02	VL-05	VL-10
A (mm)	215	215	325
B (mm)	535	630	692
C (mm)	280	345	375
Sensor	Photo sensor	Torque level sensor	
Pipe Size (mm)	Ø38		

